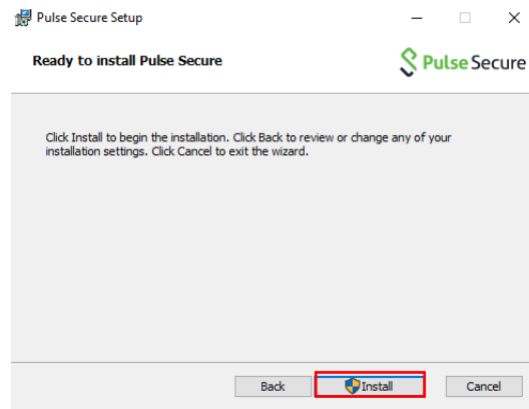


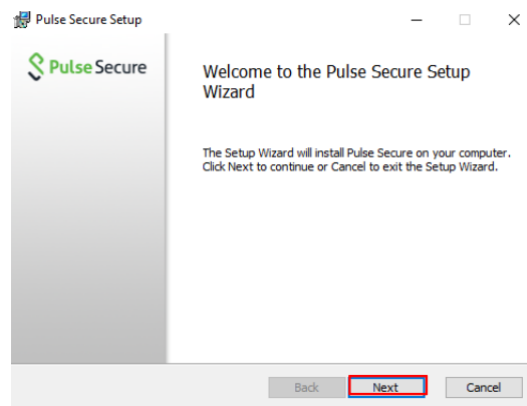
Pulse Secure installation and setting up manual (Windows 8, 8.1, 10)

Pulse Secure Installation

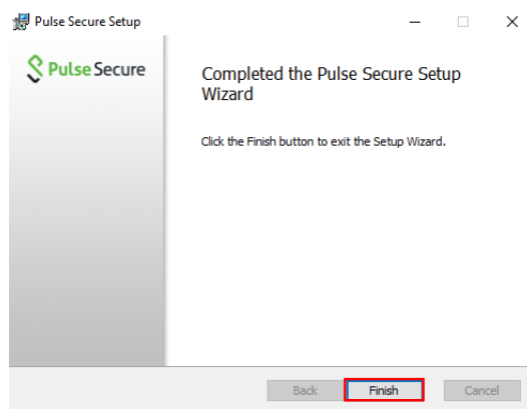
1. Double click on Pulse Secure installer to start an installation wizard and click “Install”



2. Click on “Next” button and wait until Pulse Secure is completely installed

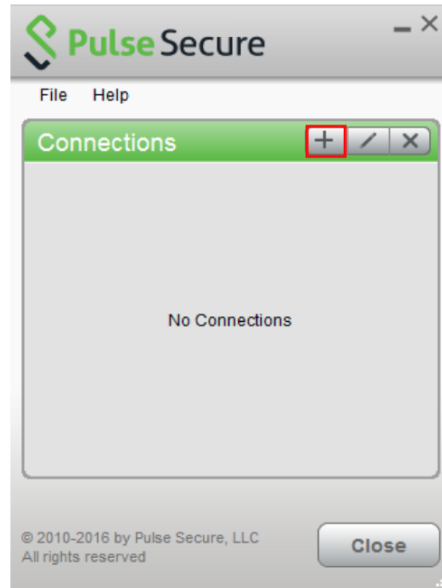


3. Click “Finish” to close the wizard

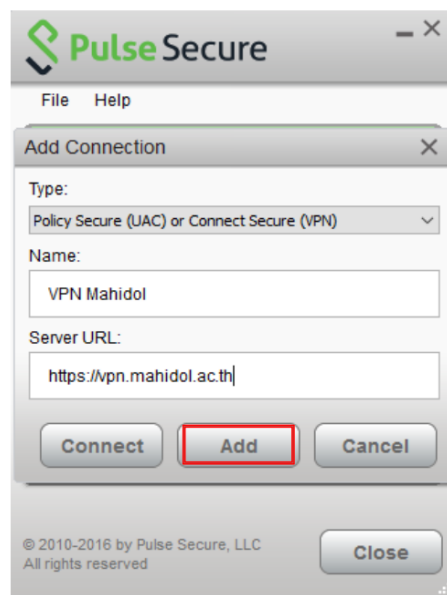


Setting up Pulse Secure for MU VPN Network

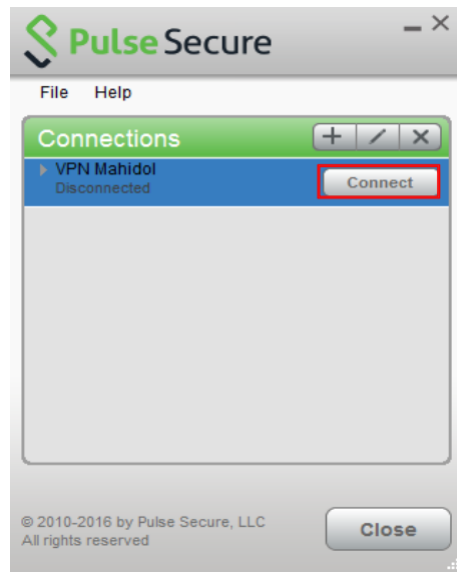
1. Double click on Pulse Secure shortcut to open Pulse Secure program. Click on “+” button to add a new connection



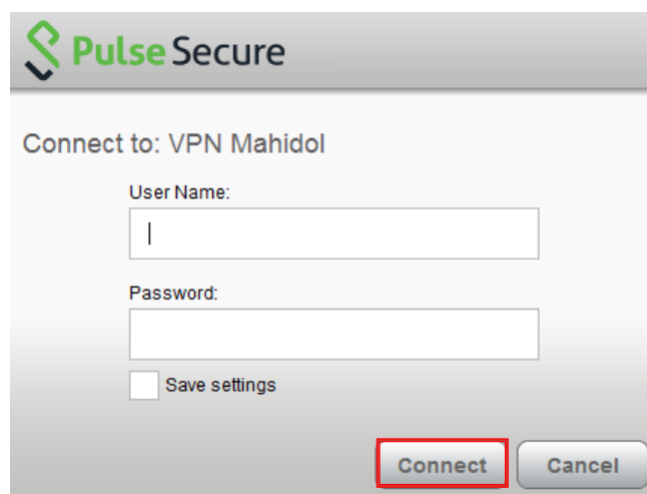
2. Set up a VPN configuration by:
 - 2.1 Name: Enter a name of a connection
 - 2.2 Server URL: Enter `https://vpn.mahidol.ac.th`
 - 2.3 Click on “Add” button to add a new connection



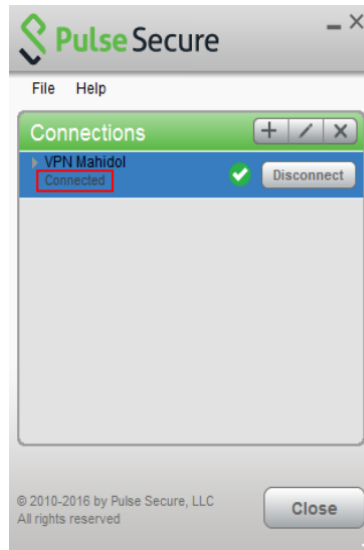
3. A new connection will appear in the connection list. To start a connection, select a connection and click “Connect” button



4. To log in by VPN, enter MU username and password and click “Connect” button
 - 4.1 For student, a username must include “u” or “g” e.g. u62XXXXX or g62XXXXX
 - 4.2 For MU Staff, a username is firstname.surname e.g. siree.abc
 - 4.3 Username does not require @mahidol.ac.th or @student.mahidol.ac.th



5. If user successfully log in to VPN, a “connected” status will appear at the bottom of connection name. In addition, check mark and disconnect button will display in the connection list



6. To disconnect from VPN, click on “Disconnect” button